



Typical Floor Plan

(1st Floor)



Note: Room dimensions mentioned in the floor plan is without taking into account the thickness of wall plaster / cladding.

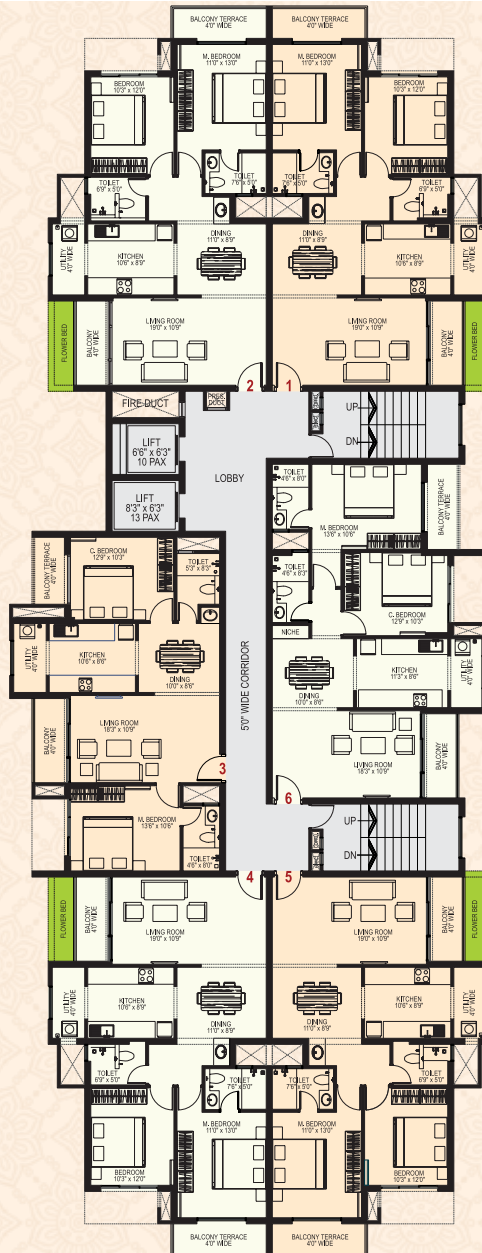


2 BHK Apartment 1183 sft (Super Builtup Area)

(1st Floor)



Note: Room dimensions mentioned in the floor plan is without taking into account the thickness of wall plaster / cladding.

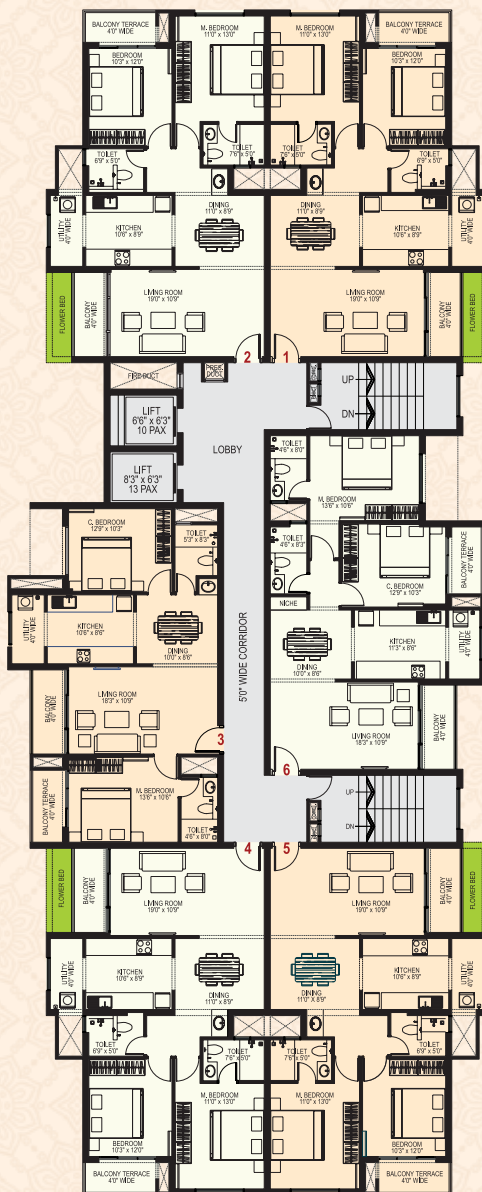


Typical Floor Plan

(2nd, 4th, 6th, 8th, 10th & 12th Floor)



Note: Room dimensions mentioned in the floor plan is without taking into account the thickness of wall plaster / cladding.



Typical Floor Plan

(3rd, 5th, 7th, 9th, 11th & 13th Floor)

Note: Room dimensions mentioned in the floor plan is without taking into account the thickness of wall plaster / cladding.





2 BHK Apartment 1138 sft (Super Builtup Area)

(1st, 3rd, 5th, 7th, 9th, 11th & 13th Floor)

Note: Room dimensions mentioned in the floor plan is without taking into account the thickness of wall plaster / cladding.





2 BHK Apartment 1203 sft (Super Builtup Area)

(1st, 3rd, 5th, 7th, 9th, 11th & 13th Floor)



Note: Room dimensions mentioned in the floor plan is without taking into account the thickness of wall plaster / cladding.

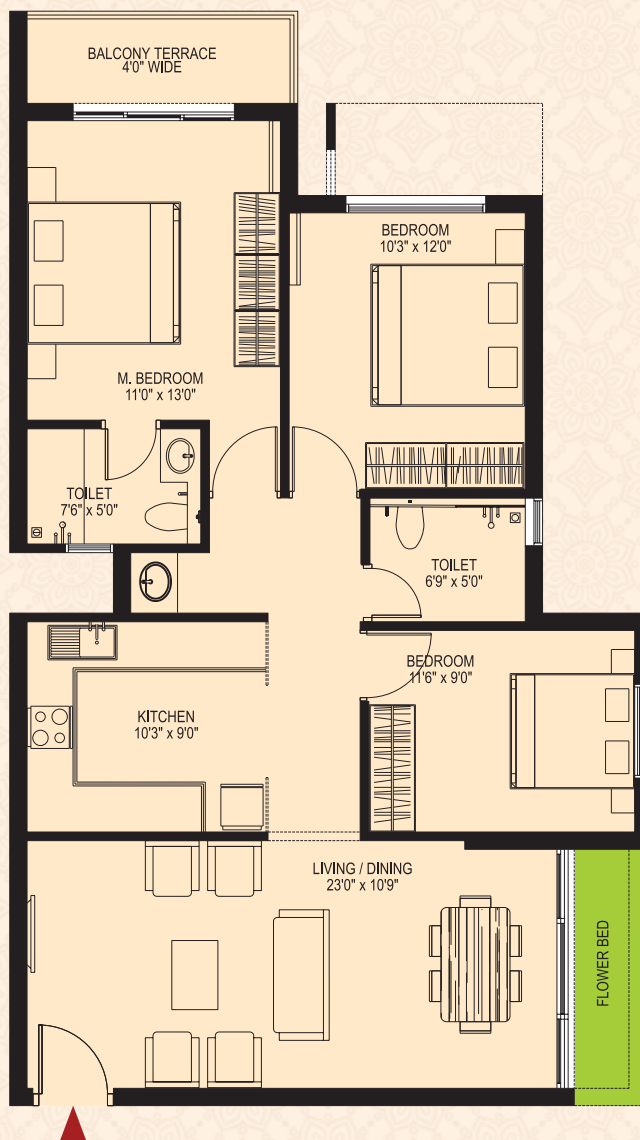


2 BHK Apartment 1263 sft (Super Builtup Area)

(2nd, 4th, 6th, 8th, 10th & 12th Floor)



Note: Room dimensions mentioned in the floor plan is without taking into account the thickness of wall plaster / cladding.



3 BHK Apartment [Optional*] 1263 sft (Super Builtup Area)

(2nd, 4th, 6th, 8th, 10th & 12th Floor)

Note: Room dimensions mentioned in the floor plan is without taking into account the thickness of wall plaster / cladding.

*Optional at extra cost.





2 BHK Apartment 1250 sft (Super Builtup Area)

(3rd, 5th, 7th, 9th, 11th & 13th Floor)



Note: Room dimensions mentioned in the floor plan is without taking into account the thickness of wall plaster / cladding.



3 BHK Apartment [Optional*] 1250 sft (Super Builtup Area)

(3rd, 5th, 7th, 9th, 11th & 13th Floor)

Note: Room dimensions mentioned in the floor plan is without taking into account the thickness of wall plaster / cladding.

*Optional at extra cost.



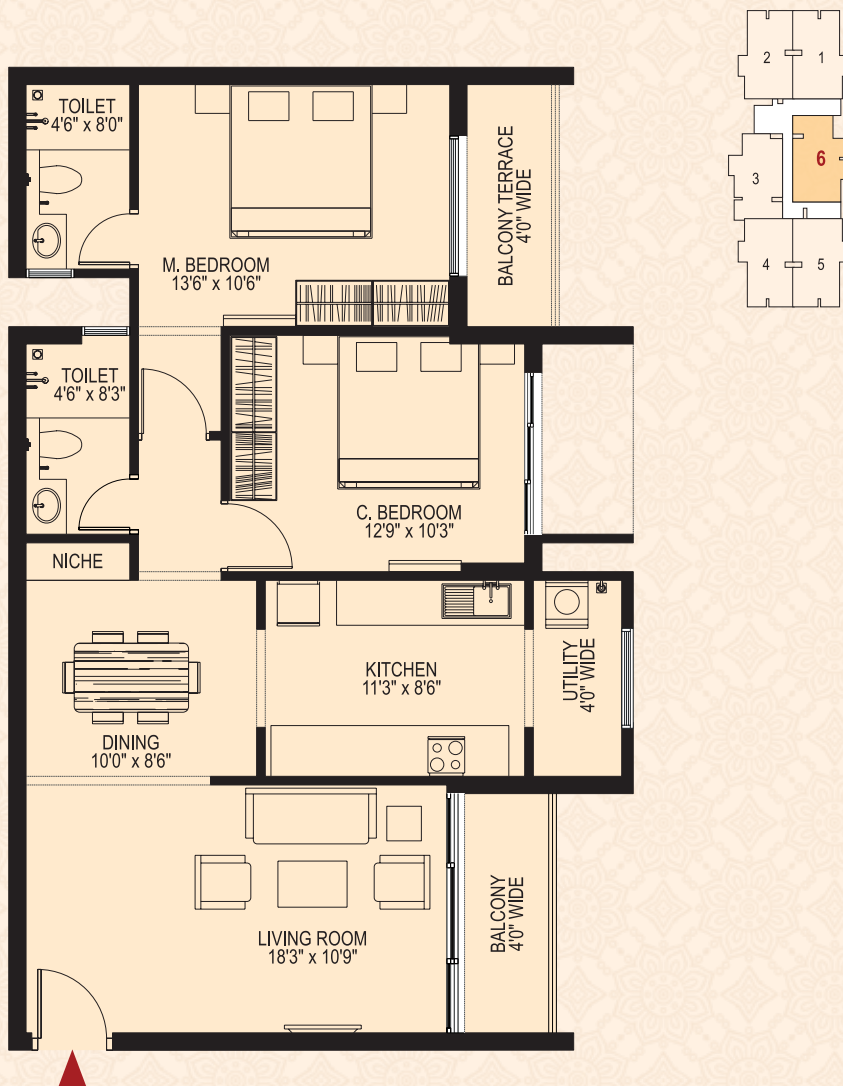


2 BHK Apartment 1138 sft (Super Builtup Area)

(2nd, 4th, 6th, 8th, 10th & 12th Floor)



Note: Room dimensions mentioned in the floor plan is without taking into account the thickness of wall plaster / cladding.



2 BHK Apartment 1203 sft (Super Builtup Area)

(2nd, 4th, 6th, 8th, 10th & 12th Floor)

Note: Room dimensions mentioned in the floor plan is without taking into account the thickness of wall plaster / cladding.

